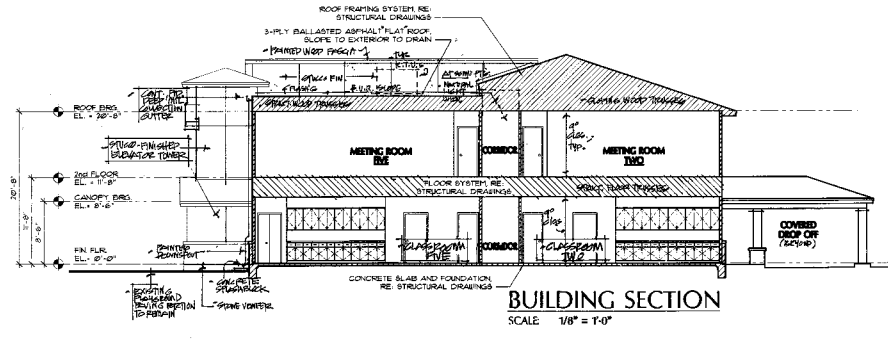
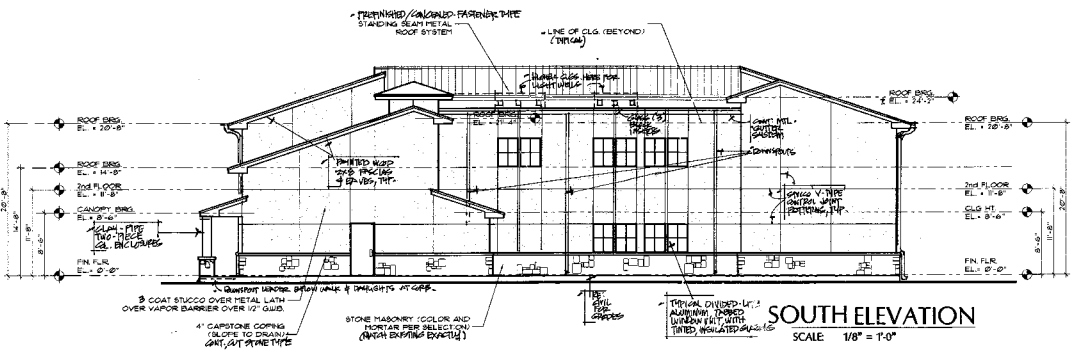


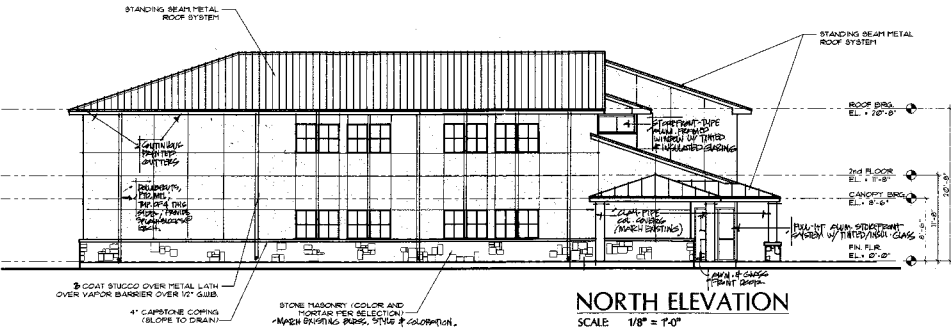
EAST ELEVATION
SCALE: 1/8" = 1'-0"



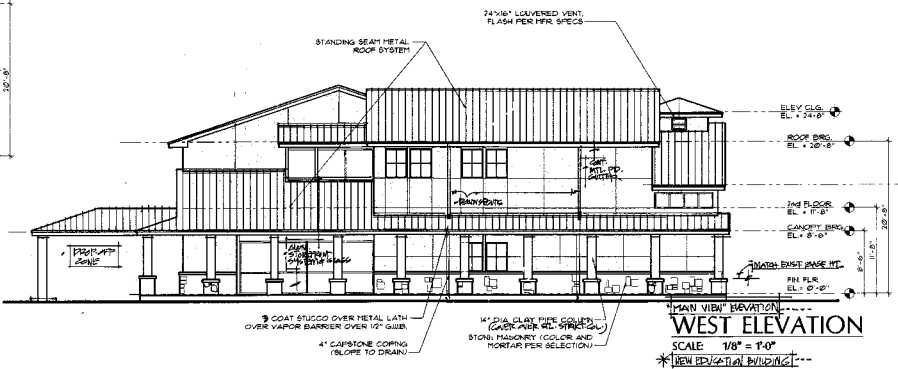
BUILDING SECTION
SCALE: 1/8" = 1'-0"



SOUTH ELEVATION
SCALE: 1/8" = 1'-0"



NORTH ELEVATION
SCALE: 1/8" = 1'-0"



WEST ELEVATION
SCALE: 1/8" = 1'-0"

DESIGN AND DEVELOPMENT SET

PEACE LUTHERAN

ARCHITECTURE
DUKE C. GARWOOD
ARCHITECTS INC.
101 West St.
Austin, Texas 78701
512-228-1887

PRELIMINARY
CONSTRUCTION

10625 F.M. 620
AUSTIN, TEXAS 78726

SHEET TITLE
EXTERIOR ELEVATIONS

ISSUED
07.28.2005

DRAWN BY
AJ

REVISED

SHEET NO.

A2.0

*PEACE LUTHERAN CHURCH